



GMT MONTHLY MEMBERSHIP PROGRESS REPORT

Results as of: 4/30/2018

Multiple District 4

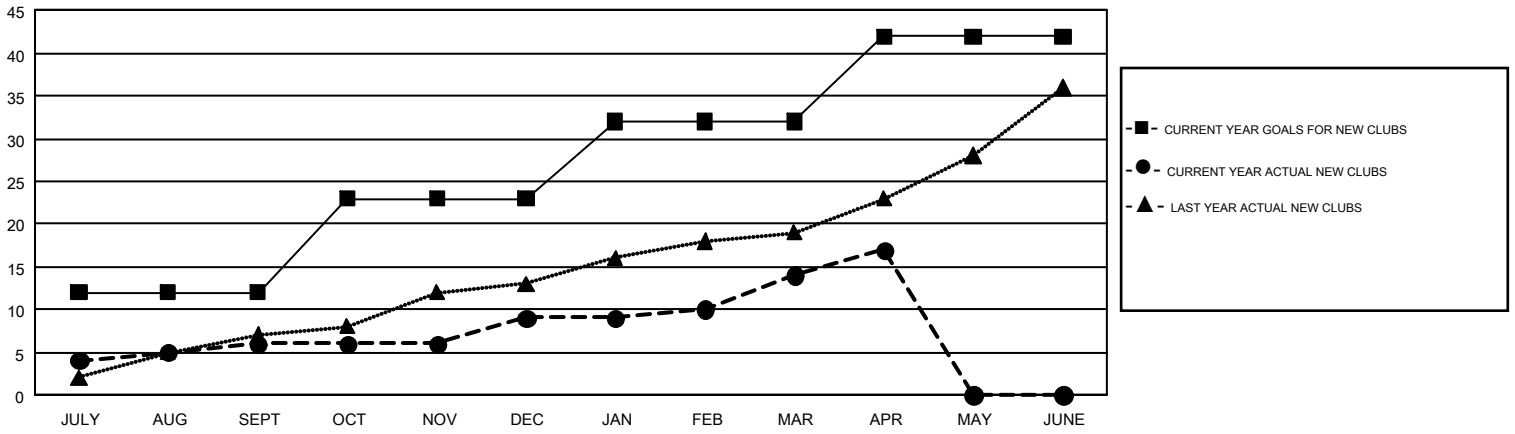
LOCATION: CALIFORNIA

GMT: HOWARD HUDSON

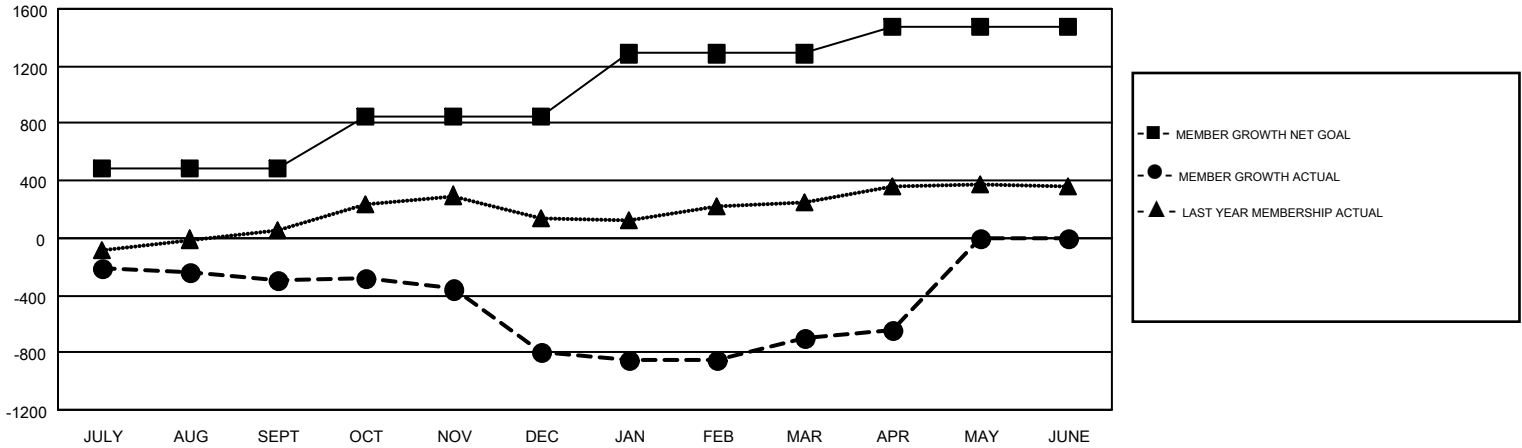
GMT CA 1

| Clubs | | | | Members | | | |
|-----------------------|---------------|-----------|---------------|-----------------------|------------------------|----------------------|--|
| RESULTS FOR 2017-2018 | | | | RESULTS FOR 2017-2018 | | | |
| QUARTER | NEW CLUB GOAL | NEW CLUBS | DROPPED CLUBS | QUARTER | MEMBER GROWTH NET GOAL | MEMBER GROWTH ACTUAL | DROPPED MEMBERS ACTUAL (including transfers) |
| JULY/AUG/SEPT | 12 | 6 | 4 | JULY/AUG/SEPT | 485 | 953 | 1,082 |
| OCT/NOV/DEC | 11 | 3 | 17 | OCT/NOV/DEC | 368 | 625 | 1,078 |
| JAN/FEB/MAR | 9 | 5 | 4 | JAN/FEB/MAR | 434 | 843 | 663 |
| APR/MAY/JUNE | 10 | 3 | 1 | APR/MAY/JUNE | 191 | 309 | 222 |

GOALS AND ACTUAL NEW CLUBS CUMULATIVE



GOALS AND ACTUAL MEMBERS CUMULATIVE



| | | | |
|------------------------|--|---------------------------------|-----------------|
| DROPPED CLUBS: 26 | 486 CLUBS OF 763 ADDED 1 OR MORE NEW MEMBERS | <u>GENDER DISTRIBUTION</u> | |
| <u>DROPPED MEMBERS</u> | | MALE | 12,720 (62.18%) |
| DECEASED | 231 | FEMALE | 7,737 (37.82%) |
| CLUB CANCELLED | 250 | TOTAL FAMILY UNIT MEMBERS | |
| OTHER | 2,563 | 3,721 | |
| TOTAL | 3,044 | FAMILY MEMBERS PAYING HALF DUES | |
| | | 1,939 | |

[CLICK HERE FOR CUMULATIVE MEMBERSHIP DATA](#)